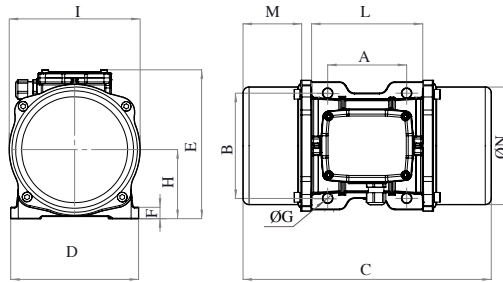




MVE 1500/3N-50A0-24V (ENZ0150050A02A0000)

DC - 2 poles - 3000 RPM - 24 V - DC

Working moment (Kg*cm)	Unbalance (Kg*cm)	Centrifugal force (Kg)	Nominal voltage (V)	Input power (kW)	Current (A)	Power Factor	Ia/In
22,4	11,2	1.616	24	0,52	21,5		5



OVERALL DIMENSIONS (mm)													
Weight (Kg)	A	B	G	Holes number	C	D	E	F	H	I	L	M	N
23	120	170	18	4	324	208	210	18	96	185	192	63	165

TECHNICAL FEATURES						
Type of grease	Greased for life	Screw	Washer	Clamping torque (Nm)	Cable type	Cable gland
/	Yes	M16	17 x 30 mm	185	2G1.5 90°	M20 80°C

BEARINGS				
Bearing model	Type	Life 100%	Life 80%	Life 50%
6306 2RS		456	891	3650

CERTIFICATION	
Atex II 3D Ex tc IIIc Tx IP66 [Tx Size 10-30:100°C - Tx Size 40-91:135°C] T.Amb -20/+40°C	