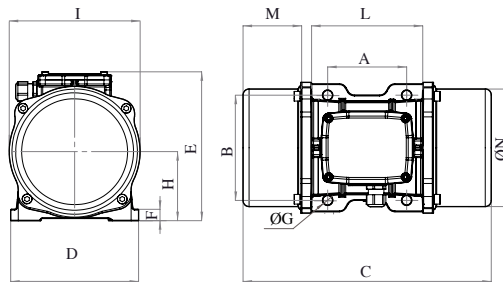




# MVE 500/3N-40A0-24V (ENZ0050040A02A0000)

DC - 2 poles - 3000 RPM - 24 V - DC

Working moment (Kg*cm)	Unbalance (Kg*cm)	Centrifugal force (Kg)	Nominal voltage (V)	Input power (kW)	Current (A)	Power Factor	Ia/In
10,4	5,2	530	24	0,26	11		5



OVERALL DIMENSIONS (mm)													
Weight (Kg)	A	B	G	Holes number	C	D	E	F	H	I	L	M	N
14,4	105	140	13	4	330	170	195	15	92	174	166	78	160

TECHNICAL FEATURES						
Type of grease	Greased for life	Screw	Washer	Clamping torque (Nm)	Cable type	Cable gland
/	Yes	M12	13 x 24 mm	80	2G1.5 90°	M16 80°C

BEARINGS				
Bearing model	Type	Life 100%	Life 80%	Life 50%
6306 2RS		1844	3602	14753

CERTIFICATION	
Atex II 3D Ex tc IIIc Tx IP66 [Tx Size 10-30:100°C - Tx Size 40-91:135°C] T.Amb -20/+40°C	