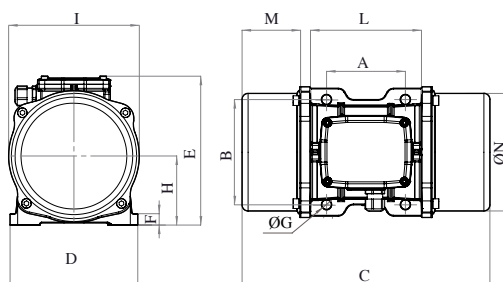




# MVE 9000/3E-85A0 [EE20900085A08A0000]

3 PH - 2 poles - 3000 RPM - 380-415 V (Delta) - 50 Hz

Working moment [Kg*cm]	Unbalance [Kg*cm]	Centrifugal force [Kg]	Nominal voltage [V]	Input power [kW]	Current [A]	Power factor	Ia/In
179,59	89,8	9.025	380-415 [Delta]	9,5	Δ 17,8	0,77	8,6



OVERALL DIMENSIONS (mm)													
Weight [Kg]	A	B	G	Holes number	C	D	E	F	H	I	L	M	N
240,3	200	320	28	4	624	385	402	40	203	394	360	130	378

TECHNICAL FEATURES						
Type of grease	Greased for life	Screw	Washer	Clamping torque [Nm]	Cable type	Cable gland
MOBILITH SHC 100	Yes	M27	28 x 50 mm	873	4G6 120°C	M32 120°C

BEARINGS				
Bearing model	Type	Life 100%	Life 80%	Life 50%
NJ 2315		3001	6314	30246

CERTIFICATION	
<p>ATEX II2 D Ex tb IIIC Tx Db IP66</p> <p>IECEX Ex tb IIIC Tx Db IP66</p> <p>CLASS II DIV.2 GROUP F,G T4</p> <p>Ex tb IIIC Tx Db IP66</p> <p>[Tx Size Micro,10-30:100°C - Tx Size 40-91:135°C]</p> <p>CONF.TO UL1004-3, UL1004-1,UL 60079-0,UL60079-31</p> <p>CERT. CSA C22.2 No.100,CSA C22.2 No.77, CSA C22.2N.60079-0,CSA C22.2N.60079-31</p> <p>T.Amb -20/+40°C</p>	    